



「IMPORT」  
「EXPORT」



**Brentwood Eng Ltd**

**AUTHORIZED REP. FOR GARLOCK SEALING & GARLOCK PIPELINE TECHNOLOGIES**



**Garlock**  
SEALING TECHNOLOGIES®

an EnPro Industries company

Are you using the best available technology?



Tel: 971 (4) 883 3652 | www.garlock.com | www.gptindustries.com | www.rubberfab.com | middle.east@garlock.com

**POWER / MINING / MARINE / OFFSHORE / INDUSTRY SUPPLIES**

# Our HSSE Policy

## Brentwood Eng.Ltd

**At Brentwood, we care for our people and the environment. We ensure that our people have a safe, healthy and secure workplace; this is a fundamental right. This policy explains how we provide this.**

### **We will:**

- Care for our people and our Clients
- Identify and manage hazards to eliminate or mitigate resultant risks.
- Prevent injury, ill-health, pollution and loss resulting from our activities.
- Be responsible in our approach to protecting the environment and minimising our impacts.
- Deliver continual improvement in our health, safety, security and environmental performance.



Charles Quaicoe  
Country Manager-Ghana

### **We do this by:**

- Ensuring we have exemplary HSSE leadership and management.
- Having effective, efficient and applied HSSE management systems.
- Understanding and complying with all legal, industry and other external requirements.
- Establishing and attaining clear HSSE objectives.
- Learning lessons from our incidents and preventing reoccurrence.
- Engaging with our people on HSSE issues.
- Working with our customers, regulators and others to promote continuous improvement.
- Training our people to be competent and safe in undertaking their roles.
- Helping our supply chain and partners to meet our own policy obligations.
- Promoting a positive HSSE culture that drives HSSEA improvement.
- Encouraging anyone to stop a job if they perceive any HSSE shortfall.

We are committed to this Policy





## BRENTWOOD ENGINEERING LIMITED



Country Manager

Brentwood Engineering Ltd is owner managed. Management adhere to fair business practices, policies and Procedures we believe that it is our continued integrity and honesty that has ensured the great growth and success of our company.

Management has been with the company since its inception and therefore essentially ARE the company. We have vast experience in locating, sourcing, specifying and supplying of goods and services – Our staff are continually trained and educated in the way we wish to conduct our business – we value our reputation as competent and reliable Supply Partners and always strive to ensure that our clients' needs are catered for, over and above their expectations.

Simply because we know where to go and who to talk to. Our vast database of contacts has been built up & based on years of experience and we use it to locate the parts you need. This means you don't waste your time and money trying to find out which company to approach and then which person within it.

Your problem is that you need to source consumables, spares, parts and accessories to keep your production running smoothly and your equipment and machines up and running. We solve that problem by finding those parts for you - quickly and at a competitive price.

### How else do we help ?

By providing you with:

- . Prompt responses to and handling of your Enquiry
- . We don't leave you wondering what's happening. If necessary, we send you progress reports;
- . Competitive pricing;
- . Full after-sales support;



Francesca Otoo  
Admin. Manager



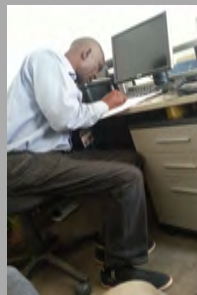
Omar Zemama  
Florida Office

### ANTI BRIBERY ANTI CORRUPTION POLICY

The objective of this anti-bribery and anti-corruption policy (the "Policy") is to provide a procedure to ensure that the Company together with its directors, officers, employees, consultants and contractors, conducts its business in an honest and ethical manner reflecting the highest standards of integrity and in compliance with all relevant laws and regulations applicable to it and in compliance with the Legislation.

Compliance with this Policy is required under Brentwood's Business Conduct and Ethics Policy.

### TEAM BRENTWOOD, USA



Kwaku Ofori  
Contracts Mger.



Benita Ofebea Ofori  
Logistics Manager

# We find what you're looking for!

**BRENTWOOD ENG. LTD**, based in, Queens, NYC and in Takoradi, Ghana, is dedicated to speed and accuracy in sourcing for your operational needs. adherent to Alliance Industrial Standards, has been accompanying you in your projects since 2013.

**We specialize in Power, Mining, Marine, Offshore Industry supplies.**

A multilingual team of dedicated technicians are at your service and able to meet all your technical and budgetary requirements.

We source and deliver, via a large network of suppliers / OEM manufacturers of premier standing, in Oil, Mining, Power, Pipeline, ATEX, all types of products (standard, bespoke or certified) in accordance with IMPA, ISSA and NATO codifications amongst others. Our access to three national platforms allows us to optimize deliveries and to increase responsiveness.

## Brentwood also does ...



Atex jib crane on offshore platform



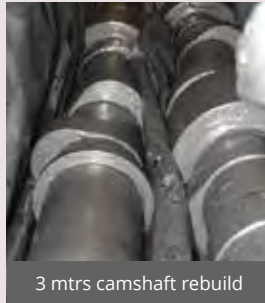
Waterbags



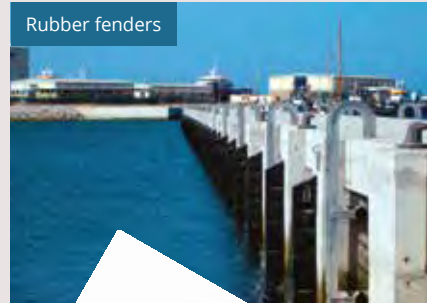
Solas aluminum gangway



Offshore pipe's diabolos



3 mtrs camshaft rebuild



Rubber fenders



Mooring buoys



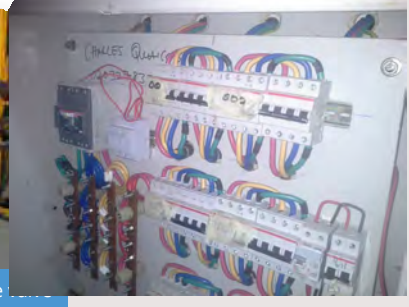
We Build Electrical Panels



**BRENTWOOD**



DN600 resilient seat gate





# / INDUSTRY

## MECHANICAL



BEARINGS / THRUST BALL BEARINGS  
 BELTS  
 BELZONA / REPAIR COMPOUND  
 COMPENSATORS  
 MECHANICAL SHAFT SEAL  
 O-RING, COPPER / FIBER JOINTS  
 PIPE COUPLINGS  
 PTFE / CERAMIC SEAL  
 PTFE / PLUMBER HEMP ROLL  
 RUBBER SHEETS  
 SHAFT BEARINGS  
 VAPOR / WATER / OIL JOINTS

## WELDING



ACCESSORIES  
 ARC WELDING EQUIPMENTS  
 ELECTRODES  
 GAS WELDING EQUIPMENTS  
 GAS WELDING HOSES AND ACCESSORIES  
 MIG / MAG / TIG EQUIPMENTS  
 REGULATORS  
 WELDING +/- ELECTRICAL CABLE  
 WELDING GAS  
 WELDING METAL RODS AND POWDERS  
 WELDING PROTECTION EQUIPMENTS  
 WELDING SMOKE EXTRACTORS

## TOOLS



BLASTING MACHINES AND ACCESSORIES  
 BUILDING TOOLS  
 CUTTING TOOLS  
 DRILL BIT, TAP&DIES TOOLS  
 ELECTRICAL HANDTOOLS  
 HANDTOOLS  
 HP WATER CLEANER  
 HYDRAULICS TOOLS  
 INDUSTRIAL VACUUMS  
 METROLOGY  
 NEEDLE SCALERS  
 NON-SPARKING HANDTOOLS  
 PNEUMATIC TOOLS  
 SUBSEA TOOLS



James Walker.



## WORKSHOP EQUIPMENT



A/C DIAG, ANALYSER, FILLER COMPRESSOR  
 AIR COMPRESSORS  
 BATTERY CHARGER / BOOSTER  
 COLUMN DRILL MACHINES  
 GAS SMOKE EXTRACTOR  
 JACK, AXLE STAND  
 LOCKERS, CABINETS  
 OPTICAL HEADLIGHT AIMER  
 TYRE BALANCER  
 TYRE REMOVAL TOOL  
 WORKSHOP CRANES  
 WORKSHOP MOBILE TOOLBOX,  
 WORKBENCH  
 WORKSHOP PRESS  
 WORKSHOP PULLER WINCHES / WINCHES  
 WORKSHOP RISE SCISSOR LIFT

## ELECTRICITY



60Hz EQUIPMENTS  
 BATTERIES  
 BEACONS  
 ELECTRICAL / INSTRUMENT CABLES  
 ELECTRICAL TRANSFORMERS  
 ELECTRONIC MEASURING DEVICES  
 EXPLOSION PROOF EQUIPMENT  
 FLOODLIGHTS  
 GENERATORS  
 INSULATION MATS  
 LIGHT BULB, FLUO TUBES  
 SOCKETS, PLUGS, FUSES  
 WATER PROOF EQUIPMENTS  
 WORKSHOP LAMPS, TORCHES

## FLUID TRANSFER



AIR DISTRIBUTION  
 BILGE PUMPS  
 CAMLOCK / TODO / WECO / NATO COUPLINGS  
 COUPLINGS  
 HOSE FLOATS  
 HYDRAULIC HOSES  
 IMMERSED PUMPS  
 MOTOR PUMPS  
 OIL HOSES  
 PLASTIC HOSES  
 PRESSURE TESTING PUMPS  
 REELS  
 REVERSE OSMOSIS DESALINATION  
 RUBBER HOSES  
 VAPOR HOSES





# / MARINE

## TUBES AND VALVES



ANTI-SPLASHING TAPES  
 DIN / JIS / ANSI FLANGES  
 DIN / JIS / ANSI VALVES  
 ELBOWS AND COUPLINGS  
 FLOW CONTROL / GATE VALVES  
 MARINE / INDUSTRIAL VALVES  
 METAL PLATES, MESHES  
 NON-RETURN VALVES  
 SAFETY VALVES  
 STAINLESS STEEL / ALU / PVC PIPES  
 STRAINERS  
 TEEKAY PIPE COUPLINGS  
 VALVE ACTUATORS  
 VENT PIPES

## MACHINE MAINTENANCE



ABSORBENTS  
 ANTI-SEIZE COMPOUNDS  
 CONDENSOR BRUSHES  
 ENGINE COOLANTS  
 ENGINE OILS  
 GREASER / GREASE PUMPS  
 GREASES  
 HYDRAULIC OILS  
 MANO / VACUO, THERMOMETERS  
 MOLYKOTE / DEVCON / KOLORKUT  
 RETENTION TRAYS  
 RUST-REMOVERS  
 STARTING SPRAY  
 TECHNICAL PLASTICS

## SAFETY AT SEA



ANTI-PIRACY  
 BREATHING APPARATUS  
 CHEMICAL PROTECTIONS  
 EPIRBs  
 EXTINGUISHERS, FIREHOSE REELS  
 FIRE FIGHTING HOSE AND ACCESSORIES  
 FIREFIGHTING CLOTHES / ACCESSORIES  
 GAS DETECTOR, EXPLOSION AMOSPHERE DETECTORS  
 MED / SOLAS BOOKS  
 PICTOGRAMS, SIGNS  
 PYROTECHNIC FLARES  
 SAFETY BUOYS, SAFETY JACKETS  
 SAFETY LAMPS  
 SAFTEY LIFERAFT  
 SKEDCO RESCUE SKEDS  
 SMOKE DETECTORS



## DECK EQUIPMENT



ALL TYPE OF GRATINGS  
 ALUMINUM GANGWAYS  
 ANCHORS, CHAINS  
 BIG-BAGS  
 BLOCKS  
 DELTA / PNEUMATIC FENDERS  
 HAWSERS, RAT GUARDS  
 HOOKS, SLINGS  
 LOAD BINDERS  
 LOADING / SAFETY NETS  
 P.A / P.P / MANILLA / KEVLAR ROPES  
 PILOT LADDERS  
 SCAFFHOLDINGS  
 SHACKLES  
 SOCKET WIRE-LOCKS  
 STAINLESS STEEL / STEEL WIRES

## NAUTICAL MATERIAL



BINOCULAR, SURVEY CAMERAS  
 CLOCKS, INCLINOMETERS  
 COMMUNICATION  
 ELECTRONIC METEO INSTRUMENTS  
 ELECTRONIC NAVIGATION INSTRUMENTS  
 FLAGS  
 HORNS, BELLS  
 MARINE CHARTS  
 NAUTICAL INSTRUCTIONS  
 NAVIGATION LIGHTS  
 RULES, COMPASS  
 SECURITY ACCESSORIES  
 SENSORS  
 VHF / UHF / TALKIE WALKIE

## HULL MAINTENANCE



AEROSOL PAINT / VARNISHES  
 AIR PAINT SPRAYERS  
 AIRLESS EQUIPMENTS  
 ANODES  
 ANTI-FOULING PAINT  
 ANTICORROSIVE PAINT  
 BLASTING EQUIPMENTS  
 FIBERGLASS SHEETS  
 FINISHING PAINT  
 PAINT THINNER  
 PAINTING ACCESSORIES  
 PAINTING BRUSHES / ROLLS  
 POLYESTER / EPOXY RESINS





Type AX Round (F-F)



Type AU Hex (F-F)

Type AR (M-M)

**HAWKE**  
HYDRAULIK

**TECHNOR**  
ITALSMEA  
A COMPANY OF MARECHAL ELECTRIC

**MARECHAL**  
ELECTRIC

**HAWKE** International  
**Crouse-Hinds** by **EATON**  
**ABB**



# / LIFE ONBOARD

## PPE



ANTI-VIBRATION GLOVES  
 EAR PROTECTIONS  
 GLASSES  
 GLOVES  
 HARNESS  
 HEAD PROTECTIONS  
 RAIN CLOTHES  
 SHOES / BOOTS  
 WORKING / HI-VIZ CLOTHES



## LIFE ONBOARD



60Hz COOKING / LAUNDRY EQUIPMENTS  
 A/C 60Hz, HEATER 60Hz  
 COOKING TOOLS  
 CURTAIN, WINDOWS BLINDS  
 IRONING ACCESSORIES  
 KITCHEN CLOTHES  
 KITCHEN UTENSILS  
 MED / SOLAS BROADLOOM CARPET, VINYL FLOOR  
 MED / SOLAS MATTRESSES, PILLOWS, LINENS  
 MISCELLANEOUS ACCESSORIES  
 TABLE CLOTHES



## HARDWARE



ALU / POLYAMID ITEMS  
 BINS  
 CIRCLIPS, PINS  
 COAT HANGER  
 DOOR CLOSERS, DOOR HANDLES  
 HINGES  
 IMPERIAL BOLTINGS / SCREWS  
 LOCKINGS  
 LOCKS  
 NYLON EXPANSION PLUGS  
 RIVETS, WIRE NAILS  
 STAINLESS STEEL / BRASS / BRZ SCREWS  
 WASHERS



## MEDICINE DRUG STORE



A / B CLASS MEDICINE DRUGS PACK  
 AEROSOLS  
 BINS  
 BROOMS  
 CARPETS  
 CHEMICAL PRODUCTS  
 CLEANING PRODUCTS  
 EYEWASH STATION  
 INSECT REPELLENT, INSECTICIDE  
 LAUNDRY DETERGENT  
 MED / SOLAS FIRST AID KIT  
 MEDICAL SWABS  
 SOAPS, DISINFECTANT  
 WHITE / COLORED RAGS  
 WIPING ROLLS



## STATIONARY HOBBIES



GAMES, VIDEO GAMES  
 MULTIMEDIA  
 MUSIC PLAYERS  
 OEM INK CARTRIDGES  
 SPORTS EQUIPMENTS  
 SPORTSWEAR  
 STATIONARY  
 WEIGHING SCALES  
 WORKING DESKS, FURNITURES



## PLUMBING



BATHROOM FURNITURES  
 PLUMBING ACCESSORIES  
 SANITARY / SHOWER FAUCETS  
 SINKS  
 WC AND ACCESSORIES



WE FIND WHAT YOU'RE LOOKING FOR!





# / MINING

Brentwood Engineering Ltd are specialists in Procurement and Supply Chain Logistics for goods and services for the Mining, Engineering, Power Generation, Oil and Gas, Medical and Hospitality industries.

With our worldwide network of suppliers and manufacturers and our 7 plus years' experience and expertise we are able to source, procure and supply

virtually anything from any plant or factory. We offer our clients the

convenience and cost and time savings of consolidating all orders from various suppliers through one supply channel thus making the control & tracking of all orders for small individual components that much easier

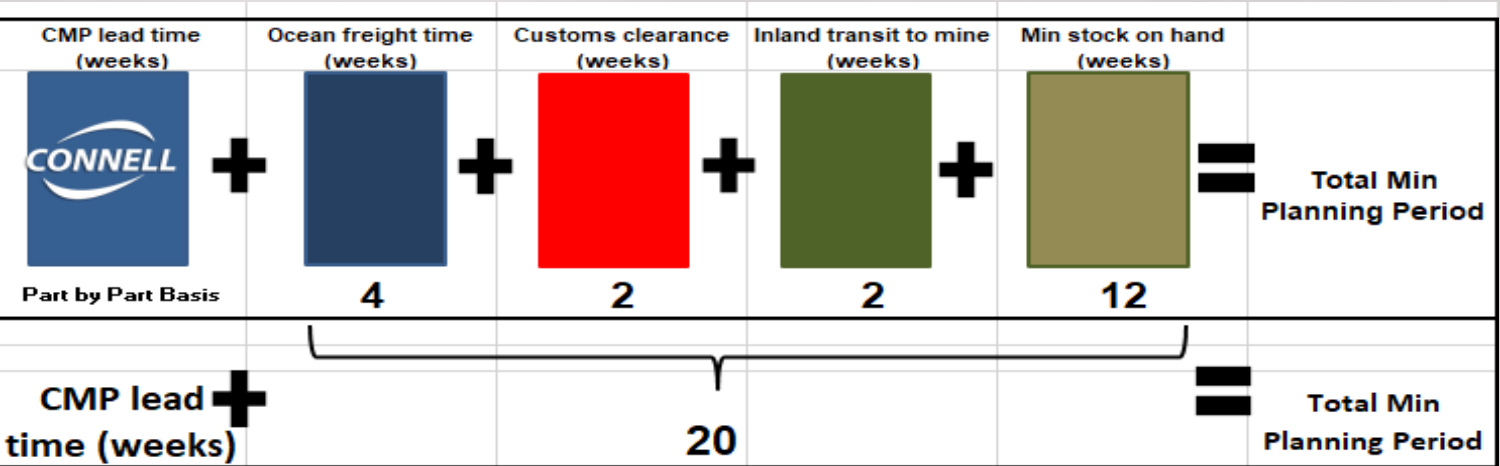
## WE STOCK MINING GET, FILTERS AND PLATES

The basic philosophy of Mining Wear Parts is to create value for our customers. This influence everything we do, from how we Source and serve our customers to the ideas and practices that lead to Cost Savings such as tooth systems for excavators and loaders and liner Plates for Trucks

Our goal is to always be close to our customers, monitor their progress and contribute actively to improve their productivity and profitability. That is who we are.

We Source and Manage the Stock Projections to avoid over stocking and under stocking, obtain Data from end-users to extrapolate real demand requirement

A model of our demand planning for a Mining Company in Ghana is as shown below.



order your Loctite Backing Compounds from us



WE FIND WHAT YOU'RE LOOKING FOR!

# BEARINGS



SCHAEFFLER



## TIMKEN

BALL BEARINGS • ROLLER BEARINGS  
SEALS AND HOUSED UNIT BEARINGS



# POWER TRANSMISSION



BELT DRIVES • BRAKES • BUSHINGS • CLUTCHES  
CLUTCH COMPONENTS • POLY CHAIN • SHEAVES • TENSIONERS  
CHAIN DRIVES • CHAIN IDLERS • ROLLER CHAIN • SPROCKETS  
SHAFT COUPLINGS & GUARDS



# GEARING

**DODGE**<sup>®</sup>

**FALK**<sup>®</sup>

*Martin*

**NORD**  
DRIVESYSTEMS

**REGAL**

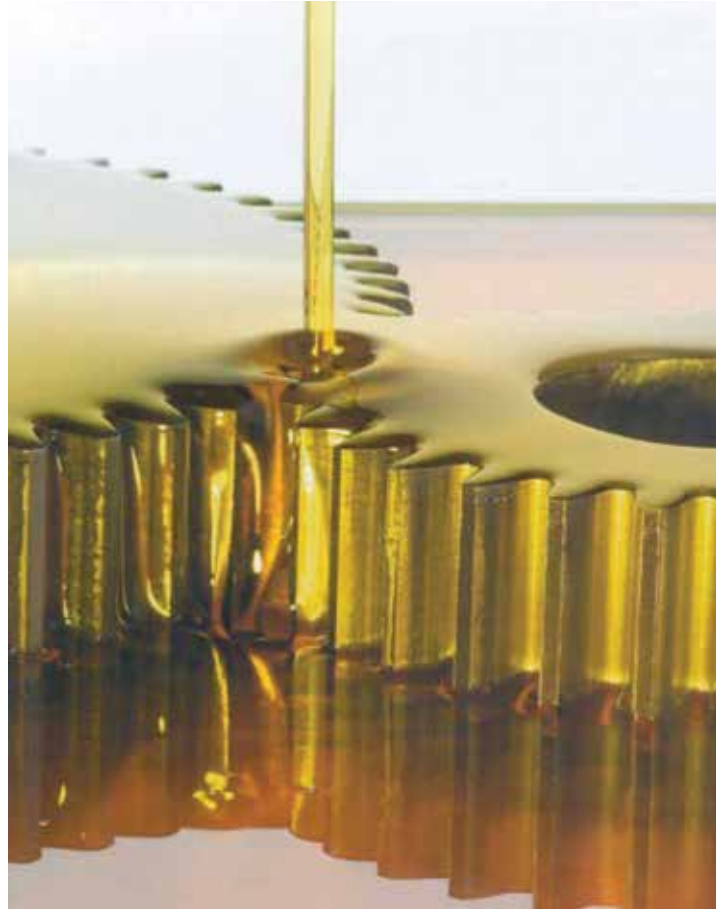
**SEW**  
EURODRIVE

ENCLOSED GEAR DRIVES • OPEN GEARING AND MILL PRODUCTS



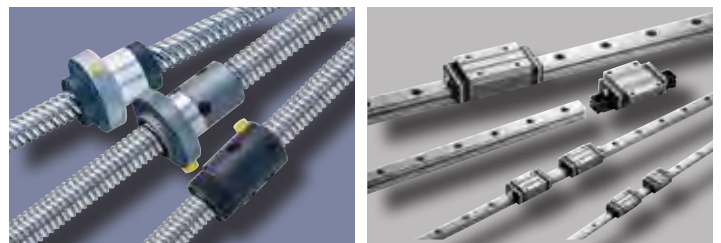
# LUBRICATION/ADHESIVES

GREASES  
LUBRICATION EQUIPMENT  
OILS • SEALANTS



# LINEAR MOTION

ROUND SHAFTING  
PROFILE RAIL • ACTUATORS  
BALL SCREWS • SPINDLES



# BULK MATERIAL HANDLING



CONVEYOR BELTS • SCREW CONVEYORS • BELT CLEANERS  
TROUGHING IDLERS • RETURN IDLERS • CONVEYOR PULLEYS  
IMPACT BEDS • SKIRT BOARDS • EMERGENCY ROPE PULLS • SIGNALING



# HYDRAULICS



A full line of components and assemblies from industry leading suppliers to meet all your hydraulic needs.

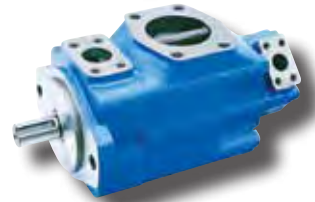
# PUMPS AND POWER UNITS

## PUMPS

- Gear
- Vane
- Piston

## POWER UNITS

- OTC
- Custom



# VALVES AND MANIFOLDS

## INDUSTRIAL VALVES

- D03
- D05
- D08

## MOBILE

- Stackable
- Mono Block





# CYLINDERS AND MOTORS

## CYLINDERS

- JIC
- Agricultural

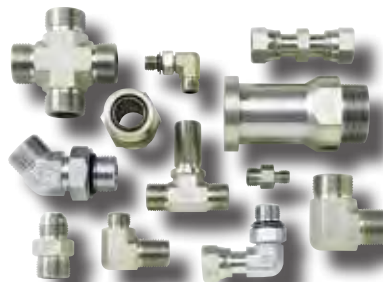
## MOTORS

- Gear
- Vane
- Piston
- Geroter



# FITTINGS, HOSE, AND ACCESSORIES

- Filters
- Hoses
- Fittings
- Accumulators
- Coolers





# BRENTWOOD ENGINEERING LIMITED

Brentwood Engineering Ltd has over the past years built up relationships with Engineers, Manufacturers, OEM's, Suppliers, Fabricators and Stockists and it is these relationships that have enabled us to provide our clients, such as You with what you require

## POWER / MINING/MARINE / OFFSHORE / INDUSTRY SUPPLIES

We deliver wherever you are in the world by **Road, Air** or **Sea**.



# IMPORT EXPORT



BRENTWOOD ENGINEERING LTD

USA : 98-40 – 57th Ave, Corona, Queens, 11368-3445 NY. USA +17183505824

Ghana : Brentwood Eng. Ltd, 6 Collins Ave, MC-Takoradi, Ghana

E : Brentwood.Engltd@Gmail.com Tel : +23320378354 /+23324412277

Charles.Quaicoe@Brentwoodlogistics.com

